

# SMARTMESH<sup>®</sup> IP Evaluation Kit

KT6000-01EK · KT6000-02EK

## About SMARTMESH IP

Dust Networks' new standards-based SmartMesh IP product line achieves unsurpassed levels of networking resilience, reliability, and scalability with advanced network management and comprehensive security. SmartMesh IP includes breakthrough Eterna™ SoC technology that enables 8x lower power consumption than competitive solutions even in harsh, dynamically changing RF environments. Cost effective, IP compatible, and widely applicable, SmartMesh IP serves an extensive range of applications, such as energy management, building automation, renewable energy, and other implementations in smart infrastructure that call for ultra low power.

## Product Description

The SmartMesh IP Evaluation Kit enables you to setup a multi-hop mesh network, including sending and receiving data, sampling sensor input, digital actuation output, event notification, and (optional) location awareness.



Lighting Control



Transportation



Building Automation



Renewable Energy



Outdoor Monitoring



## KEY BENEFITS

- Ultra low-power network can run on batteries, energy harvesting or line power
- Location awareness (optional) with up to 3-meter accuracy indoors and outdoors
- Supports analog, digital, SPI, I<sup>2</sup>C, and 1-Wire<sup>®</sup> sensors
- Provides IPv6 addressability by combining 6LoWPAN with IEEE 802.15.4e
- 2.4 GHz for international operation

## KIT CONTENTS

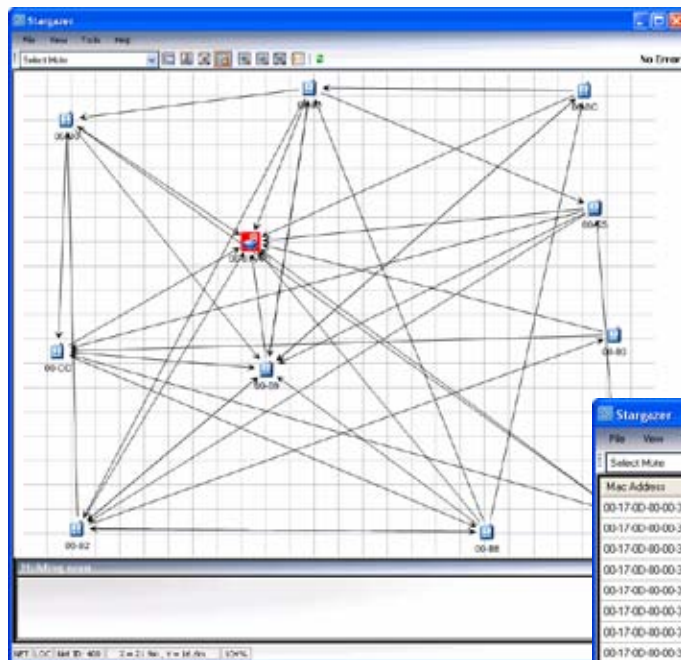
- 1 network manager
- 10 evaluation modules
- 1 USB cable for connecting to a computer running the Stargazer application
- 1 signal breakout cable for connecting sensors
- Location engine (KT6000-02EK only)
- Windows-based Stargazer application software on CD-ROM
- Evaluation Kit User's Guide

# SMARTMESH® IP Evaluation Kit

KT6000-01EK · KT6000-02EK

## SmartMesh IP Evaluation Module

The standard SmartMesh IP Evaluation Kit provides everything you need to demonstrate mesh network performance, data monitoring, digital actuation, and event notification. The kit can be updated to enable location awareness, which additionally provides the current location of any node on demand. The evaluation modules include a battery, antenna, and on-board LEDs, and can be used as-is to quickly deploy a multihop network. External sensors may be attached to the modules via the breakout port.



## Stargazer Application

The Stargazer application provides a graphical view of the network and allows you to configure, monitor, and manage the network from a Windows-based PC connected to the SmartMesh IP network manager. For kits that have location awareness, Stargazer can display the location of selected nodes on demand.

Mac Address	Name	State	Reliability (%)
00-17-00-80-00-38-00-21	00-21(JIP)	Operational	-
00-17-00-80-00-38-00-E9	00-E9	Operational	100
00-17-00-80-00-38-00-E8	00-E8	Operational	100
00-17-00-80-00-38-00-C2	00-C2	Operational	100
00-17-00-80-00-38-00-E2	00-E2	Operational	100
00-17-00-80-00-38-00-E3	00-E3	Operational	100
00-17-00-80-00-38-00-E1	00-E1	Operational	100
00-17-00-80-00-38-00-C5	00-C5	Operational	100
00-17-00-80-00-38-00-8C	00-8C	Operational	100
00-17-00-80-00-38-00-00	00-00	Operational	100
00-17-00-80-00-38-00-CC	00-CC	Operational	100



Dust Networks Inc.  
30695 Huntwood Avenue  
Hayward, CA 94454

+1 (510) 400.2900  
sales@dustnetworks.com  
www.dustnetworks.com